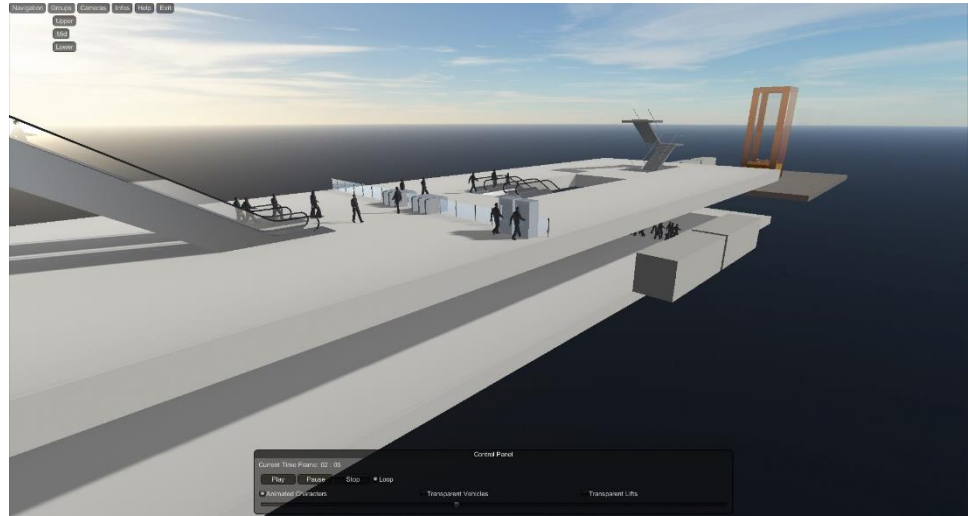


**Key benefits**

- Standalone simulation viewer
- Produce freely distributable executable file containing results in viewer
- Viewer requires no prior STEPS or pedestrian modelling experience
- Active investigation of results when compared to static images or fly-through



**STEPS LIVE Interface**

**STEPS LIVE: Present : Share : Distribute**

STEPS LIVE will allow you to present, share and distribute your results created within STEPS in a fully interactive, standalone package that is easy to use and distribute. Combining your pedestrian modelling data and 3D design layouts in an immersive real-time environment, STEPS LIVE provides a platform for detailed discussion and understanding of results. It allows for the rapid sharing of results that all stakeholders can explore themselves with no experience of STEPS or pedestrian modelling required.

Designing the STEPS LIVE interface with industry leading Unity 3D engine means that it can work on standard laptops and computers. STEPS LIVE will complement the high quality static images and animations already available directly from STEPS. This provides the end user with full control of movement within the STEPS model and the option to navigate through time to visualise a selected time period.

STEPS LIVE creates a powerful and easy to use presentation tool for designers, clients and other stakeholders. It can assist in design exploration and enables the user to identify and solve problems early in the design development phase; saving time and money. It is also an effective and attractive way to provide stakeholders and designers with a view of how a design would look upon completion.

**Main features**

- 3D interactive environment
- Multiple navigation modes
- View of pedestrian movements from pre-defined cameras
- Walkthrough option
- User-friendly interface
- Ability to show/hide groups of geometrical elements (eg hide walls)
- Enhanced rendering

## STEPS LIVE Interface workflow

Build STEPS model and run simulation

Record pedestrian movement data with tracking event feature

Export geometry from STEPS model

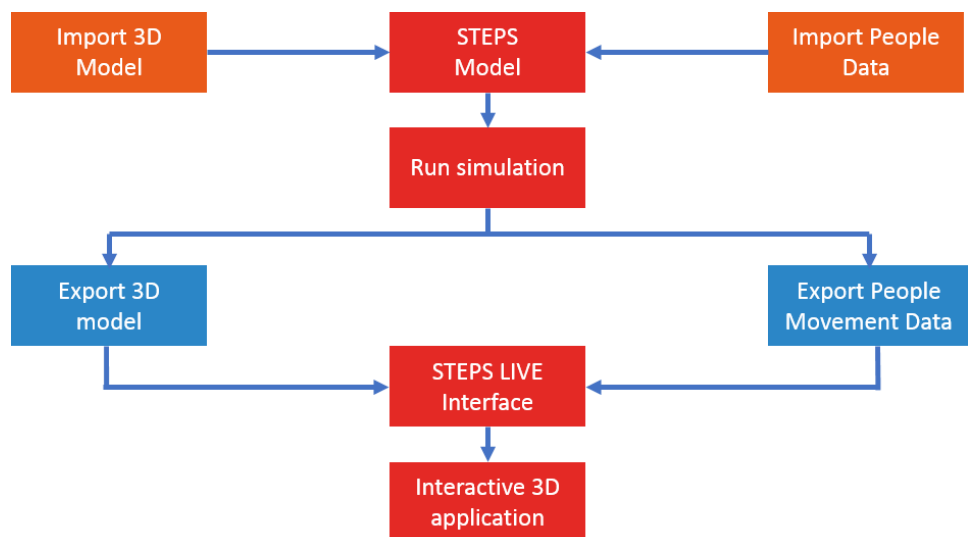
Import tracking event data and geometry through STEPS LIVE interface

Save STEPS LIVE model as an executable file

Run executable file to enter 3D interactive environment

## STEPS LIVE: Interface workflow

The workflow to create an interactive 3D model is presented below:



## Further information

If you are interested in upgrading your STEPS licence to benefit from the 3D interactive visualisation capabilities, please contact us at [steps@mottmac.com](mailto:steps@mottmac.com)

For more information on the Unity licence pricing information, please go to:

<http://unity3d.com/>

